

Compact Telehandlers

Regulatory area: AU

TF27.6





Comfort: The best workplace



Exclusive comfort

An unprecedented design guarantees maximum functionality and comfort; grouping the information provided to the driver and the controls of the various systems and devices for optimal ergonomics. The reverse shuttle on the steering wheel is also present on the joystick.

Cab entry

To ensure simple and easy access to the cab, the door of Merlo telehandlers can be opened by up to 180°. In addition, the inside of the door is equipped with a large handrail to help the operator when getting inside and outside of the cab.

Air-conditioning

Developed according to automotive standards, cutting the warm-up and cool-down times in half compared to a conventional air conditioning system. The inlet vent is placed on the side of the cab, away from potential sources of dust and dirt, while inside there are 8 vents.

Efficiency: Simpler and smarter



Transmission

In order to ensure a reduction in consumption and operating costs, Merlo telescopic handlers boast full electronic management of the transmission and engine, in order to minimise RPM and, consequently, fuel demand.

Steering Modes

The axles ensure the maximum steering angle to perform manoeuvres in tight spaces. Additionally, the operator can manage the steering of the machine with three different options according to the specific needs of the job.

Visibility

Merlo's improved visibility increases range of movement and safety for operators.

Performance: Everything at your fingertips



Transmission

The Merlo telehandlers have excellent braking capacity when the accelerator pedal is released, guaranteeing high torque to the wheels during material handling and transfers, as well as millimetric precision of movements when positioning the load.

Engines

All models feature a combustion engine in an original Merlo mounting layout, developed by Merlo with the invention of the panoramic visibility models, ensuring maximum accessibility to components in case of programmed and/or extraordinary maintenance.

Axles

The exclusively designed axles are manufactured and developed in-house by Merlo, and can be equipped with differential lock to ensure traction on any terrain, regardless of how unstable.

Safety: Not just feelings



Active safety

In order to remain fully compliant with regulations in frontal tipping prevention, Merlo handlers are equipped with features developed specifically to keep the operator safe from frontal tipping, without sacrificing performance, particularly of boom speed and lifting capacity.

Aerial work platform

The Merlo telehandlers can be configured with aerial work platform. This solution, complying with EN280 standard, assures an increased level of active and passive safety during work at heights, and enhances machine versatility.

Certified cab

All Merlo telehandlers have a metal structure above the glass roof on the outside of the cab to comply fully with FOPS Level II standard, the most stringent certification level in protecting the operator from falling objects.



1 - 180° OPENING	A door that made history! Merlo is the only manufacturer to offer a door with 180° split opening. Standard on the entire range.
2 - COMPACTNESS	Size matters! The absence of bulky counterweights, thanks to the studied balancing of the machine, makes Merlo models often the most compact in their category.
3 - EPD ECO POWER DRIVE	Maximum savings and efficiency! The Merlo-patented EPD system electronically controls engine and transmission. It manages engine speed, hydrostatic pump flow rate, and hydrostatic drive displacement, maximising efficiency and reducing RPM, saving up to 18% in fuel consumption.
4 - IMPLEMENT RECOGNITION	Every implement has its own features. Thanks to the automatic implement recognition system, the ASCS adapts load chart and safety limits to guarantee maximum performance in total safety at all times. Standard on the entire range.



PERFORMANCE AND FEATURES

Performance

Unladen weight (kg)	
Maximum load capacity (kg)	
Lift height (m)	
Maximum reach (m)	
Lift height at max. load capacity (m)	
Reach at max. load capacity (m)	
Load capacity at max. lift height (m)	
Load capacity at max. reach (kg)	
Boom side-shift (mm)	
Frame levelling (%)	
Boom section	

Powertrain

Engine	
Range/Cylinders	
Engine power (kW/HP)	
Anti-pollution technology	
Reversible Fan	
Maximum speed (km/h)	
Fuel tank capacity (l)	
AdBlue tank capacity (l)	
Hydrostatic transmission	
EPD	
Joystick autoaccelerante	
Axles	
Reducers	
Brakes	
Automatic parking brake	

Hydraulic

Hydraulic pump	
Delivery / pressure (L / MIN - BAR)	
Hydraulic oil tank capacity (l)	
Auxiliary hydraulic service on boom	
Rear service line	

Cab

Cab finishing	
ASCS	
FOPS II Cab	
ROPS Cab	
Controls	
Tilting cab	
Reverse shuttle	

Configuration

Hydropneumatic Suspension CS Merlo	
Hydropneumatic Suspension BSS Merlo	
Hydropneumatic Suspension EAS Merlo	
Work lights on cab	
Sun-shade in the cab	
Tac-lock	
Pre-arrangement for aerial work platform	
Two floating forks	
Pedal Inching-Control	
Permanent four-wheel drive	
All wheel steering	
Three steering way	
Standard tyres	
OPT tyres	
Hydraulically controlled stabilizers	
Turret rotation	
Tractor type approval	
Pneumatic brakes (ton)	
Hydraulic brakes (ton)	
PTO	
3-point rear linkage	

TF27.6

4850
2500
5.9
3.3
4.6
1.2
1500
1000
-
-
2

Kohler 2504 TCR
2500/4
55,4/75,1
Stage V - DOC + DPF
—
40
70
-
TOP - 1V
PLUS
—
Axial
Epicicloidali
A disco a secco
●

Gear + FS
95-210
70
●
○

Standard
Light
●
●
Joystick elettronico
—
Dual reverse

—
○
—
●
○
●
○
●
●
●
●
12/75-18
300/80-15.3
—
—
—
—
○
-
-

- not available
- standard
- optional

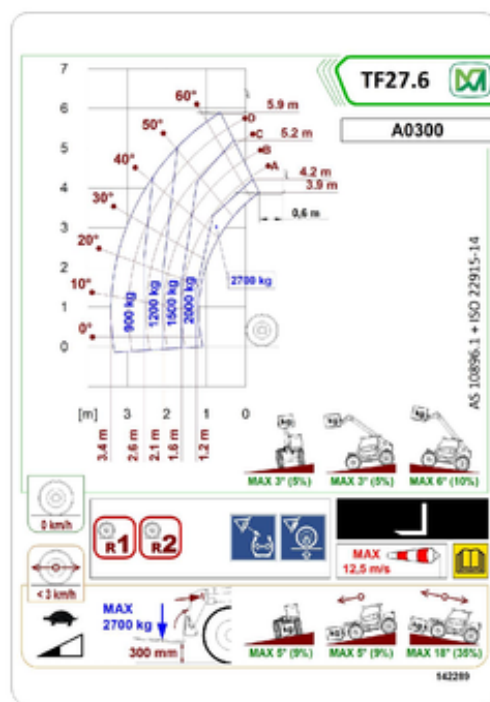
Dimensions

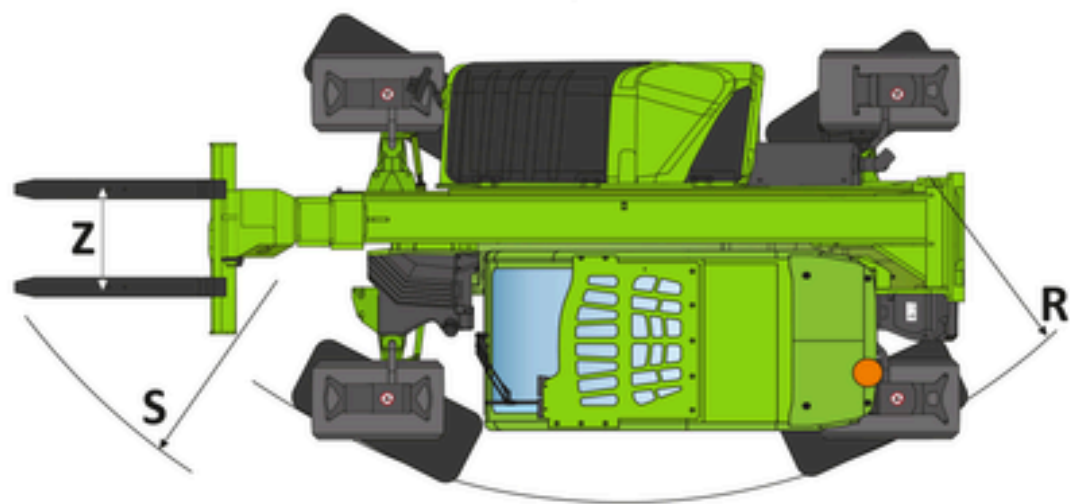
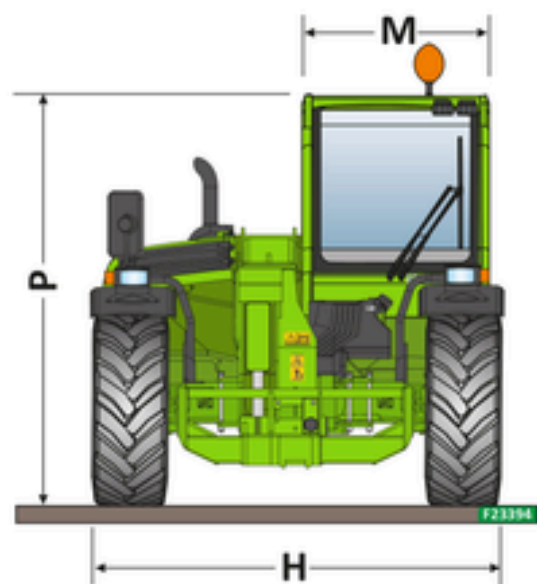
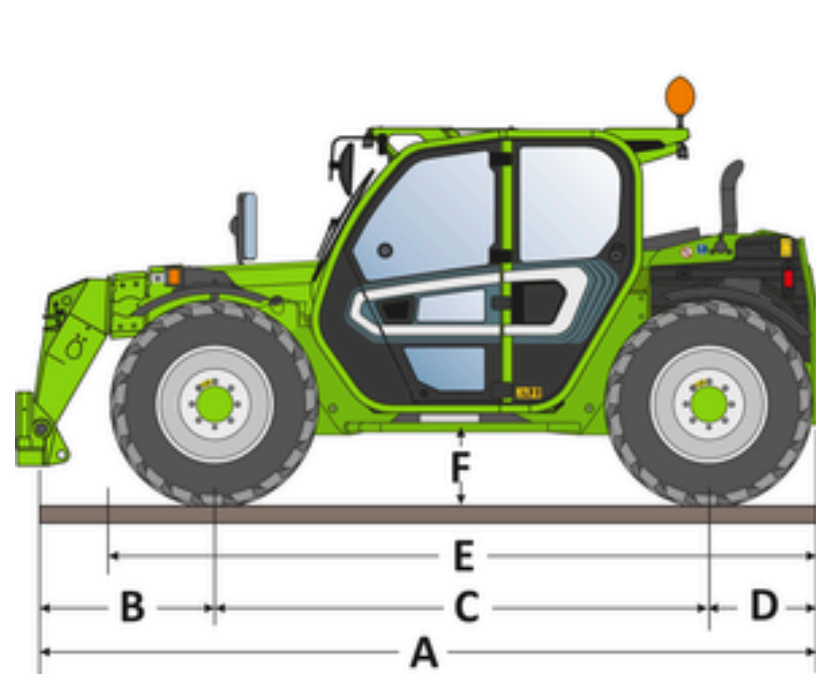


TF27.6

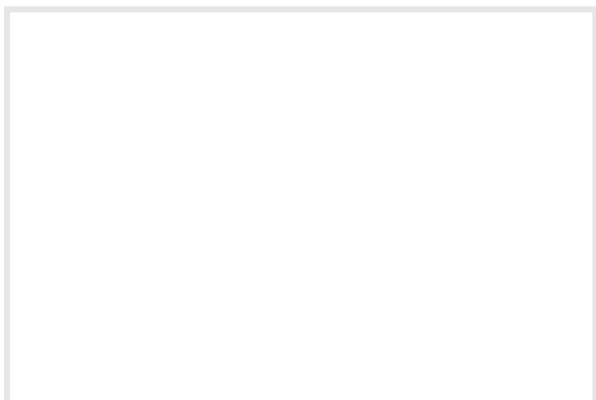
A - Length	3910
C - Wheelbase	2450
F - Ground clearance	330
H - Width	1860
M - Cabin width	1010
P - Height	2020
R - Turning radius at wheels	3370
S - Turning radius at forks	4200

Technical Details





Your Merlo dealer



MERLO S.P.A.

Via Nazionale, 9
12010 S. Defendente di Cervasca,
(Cuneo) Italia
Tel. +39 0171 614111

info@merlo.com
www.merlo.com

